



GAT MONTHLY MEMBERSHIP PROGRESS REPORT

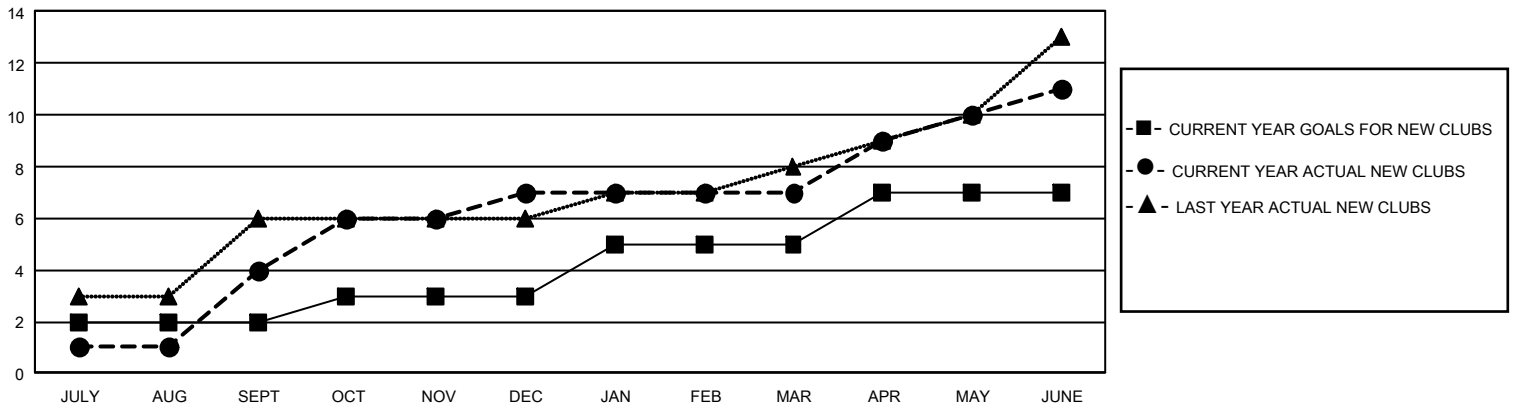
Results as of: 6/30/2025

GMT Constitutional Area 5 - E, Group P

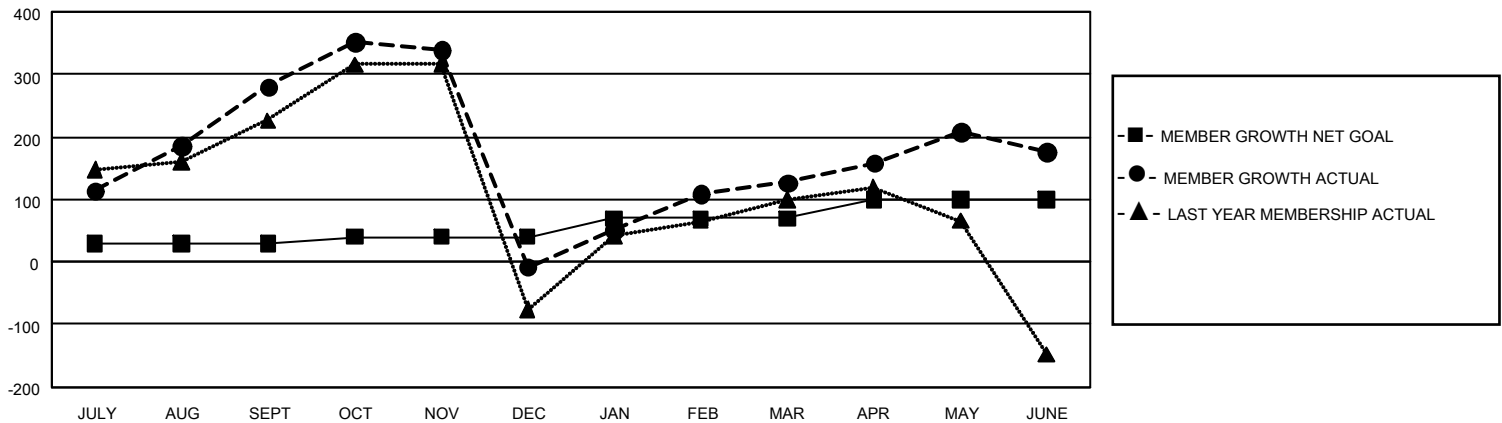
REPORT DOES NOT INCLUDE CLUBS IN UNDISTRICTED AREAS.

| Clubs | | | | Members | | | |
|-----------------------|---------------|-----------|---------------|-----------------------|------------------------|----------------------|--|
| RESULTS FOR 2024-2025 | | | | RESULTS FOR 2024-2025 | | | |
| QUARTER | NEW CLUB GOAL | NEW CLUBS | DROPPED CLUBS | QUARTER | MEMBER GROWTH NET GOAL | MEMBER GROWTH ACTUAL | DROPPED MEMBERS ACTUAL (including transfers) |
| JULY/AUG/SEPT | 6 | 4 | 1 | JULY/AUG/SEPT | 30 | 481 | 150 |
| OCT/NOV/DEC | 3 | 3 | 1 | OCT/NOV/DEC | 10 | 203 | 470 |
| JAN/FEB/MAR | 6 | 0 | 3 | JAN/FEB/MAR | 30 | 200 | 39 |
| APR/MAY/JUNE | 6 | 4 | 1 | APR/MAY/JUNE | 30 | 550 | 441 |

GOALS AND ACTUAL NEW CLUBS CUMULATIVE



GOALS AND ACTUAL MEMBERS CUMULATIVE



DROPPED CLUBS: 6

212 CLUBS OF 315 ADDED 1 OR MORE NEW MEMBERS

GENDER DISTRIBUTION

| | |
|----------------------|----------------|
| MALE | 3,318 (46.33%) |
| FEMALE | 3,843 (53.66%) |
| NON BINARY | 0 (0.00%) |
| PREFER NOT TO ANSWER | 1 (0.01%) |

DROPPED MEMBERS

| | |
|----------------|--------------|
| DECEASED | 46 |
| CLUB CANCELLED | 12 |
| OTHER | 1,038 |
| TOTAL | 1,096 |

[CLICK HERE FOR CUMULATIVE MEMBERSHIP DATA](#)

| | |
|---------------------------------|-----|
| TOTAL FAMILY UNIT MEMBERS | 525 |
| FAMILY MEMBERS PAYING HALF DUES | 283 |